



www.kings-group.net

248 Hoe Street
Walthamstow E17 3AX
Tel: 020 8521 1122

Grove Green Road, London, E11 4EL
£1,700 Per Month

This two bedroom apartment not only benefits from being in a perfect position for city professionals, situated on Grove Green Road the property is just minutes to Leyton Central Line station.

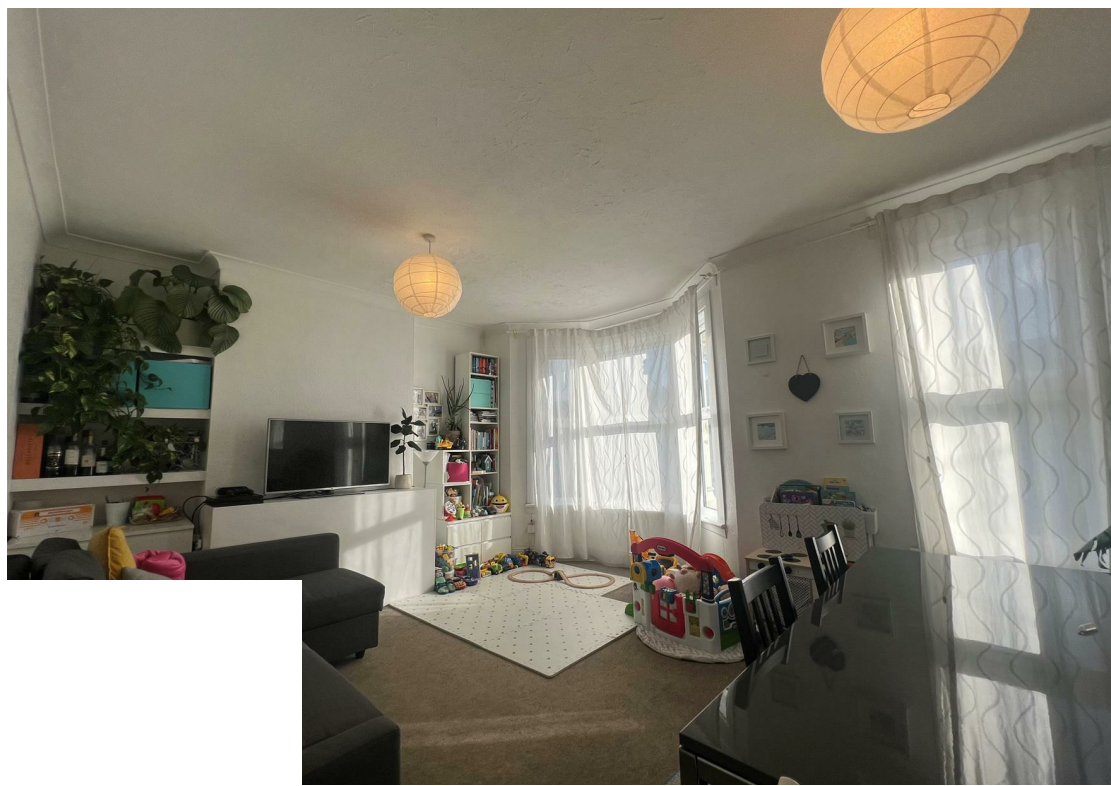
Leyton station is no more than a five minute walk along Grove Green Road from this house, this means that in just one stop you have Stratford International station, Westfield Shopping Center and the Queen Elizabeth Olympic Park. It also means that you are only four stops to Liverpool Street in Central London.

Other more local amenities include the popular Francis Road which has become a very sought after location in the last few years, although there has never officially been a village in Leyton, the residents are muting the area as "Leyton Village", it even has its own Facebook page! The area has undergone some gentrification and has a number of eateries and bars that include the Marmelo Kitchen which cooks up a host of yummy dishes and the Yard Arm is a small independent shop specialising in organic wines and craft beer.



Energy Efficiency Rating		
	Current	Potential
Very energy efficient - lower running costs		
(92 plus) A		
(81-91) B		
(69-80) C		
(55-68) D		
(39-54) E		
(21-38) F		
(1-20) G		
Not energy efficient - higher running costs		
England & Wales	EU Directive 2002/91/EC	

Environmental Impact (CO ₂) Rating		
	Current	Potential
Very environmentally friendly - lower CO2 emissions		
(92 plus) A		
(81-91) B		
(69-80) C		
(55-68) D		
(39-54) E		
(21-38) F		
(1-20) G		
Not environmentally friendly - higher CO2 emissions		
England & Wales	EU Directive 2002/91/EC	





Associated Offices in London, Essex and Hertfordshire
Kings Head Office Tudor Lodge, Burton Lane, Goffs Oak, Hertfordshire EN7 6SY Tel: 01707-872000

